

ORIGINAL ARTICLE

Open Access



Changes in physicochemical properties and microbial community succession during leaf stacking fermentation

Guanghai Zhang¹, Lu Zhao¹, Wei Li¹, Heng Yao¹, Canhua Lu¹, Gaokun Zhao¹, Yuping Wu¹, Yongping Li¹ and Guanghui Kong^{1*}

Abstract

Leaf stacking fermentation involves enzymatic actions of many microorganisms and is an efficient and environmentally benign process for degrading macromolecular organic compounds. We investigated the dynamics of metabolite profiles, bacterial and fungal communities and their interactions during fermentation using cigar leaves from three geographic regions. The results showed that the contents of total sugar, reducing sugar, starch, cellulose, lignin, pectin, polyphenol and protein in cigar tobacco leaves was significantly decreased during fermentation. Notably, the furfural, neophytadiene, pyridine, benzyl alcohol, geranylacetone, 3-hydroxy-2-butanone, N-hexanal, 3-Methyl-1-butanol and 2,3-pentanedione were important features volatile aroma compounds during fermentation. The α -diversity of fungi and bacteria initially increased and then decreased during fermentation. An analysis of variance showed that microbial diversity was influenced by fermentation stages and growing locations, in which the all stages had greater impacts on α - and β -diversity than all regions. Microbiome profiling had identified several core bacteria including *Sphingomonas*, *Bacillus*, *Staphylococcus*, *Pseudomonas*, *Ralstonia*, *Massilia* and *Fibrobacter*. Fungal biomarkers included *Aspergillus*, *Penicillium*, *Fusarium*, *Cladosporium* and *Trichomonascus*. Interestingly, the molecular ecological networks showed that the core taxa had significant correlations with metabolic enzymes and physicochemical properties; bacteria and fungi jointly participated in the carbohydrate and nitrogen compound degrading and volatile aroma compound chemosynthesis processes during fermentation. These studies provide insights into the coupling of material conversion and microbial community succession during leaf fermentation.

Key points

- Furfural, neophytadiene, pyridine, benzyl alcohol, geranyl acetone, 2-butanone, 3-hydroxy-, N-hexanal, isoamylalcohol and 2,3-pentanedione were important features volatile aroma compounds.
- The *Sphingomonas*, *Bacillus*, *Staphylococcus*, *Pseudomonas*, *Ralstonia*, *Massilia*, *Fibrobacter*, *Aspergillus*, *Penicillium*, *Fusarium*, *Cladosporium* and *Trichomonascus* play an important role in fermentation.
- The bacteria and fungi jointly participated in the degradation of carbohydrate and nitrogen compounds in cigar tobacco leaves during fermentation.

*Correspondence:
Guanghai Kong
13908776036@163.com

Full list of author information is available at the end of the article

Keywords Cigar Tobacco leaf, Fermentation, Microbial community, physicochemical property, material conversion

Introduction

In the absence of fermentation, cigar tobacco leaves remain crude at the end of air-curing. Changes in chemical composition that occur during air-curing constitute preparatory rather than decisive steps on the way from the green tobacco leaves to the satisfactory and industrially acceptable smoking quality (Frankenburg 1946). It is necessary to carry out sweating or aging for a certain period of time to eliminate the pungent and bitter taste of the leaves and to boost accumulations of aromatic compounds that may originate from the products burned and distilled during smoking (Frankenburg 1950). Different complex chemical reactions are involved in tobacco aroma formation, including degradation of carbohydrates, degradation of chlorogenic acid, degradation of proteins, Maillard reaction, Strecker degradation and caramelization reactions (Banozic et al. 2020). Tobacco fermentation is a process of biochemical transformation of various organic compounds in tobacco leaves under the synergistic action of inorganic elements, enzymes and microorganisms (Zhang et al. 2023). Chemical reaction effects mainly include redox reactions and Maillard reactions. Organic matter is oxidized by oxygen in the air-during the catalysis of inorganic elements (such as iron, and magnesium). Frankenburg proposed that tobacco leaf fermentation was a process of substance transformation catalyzed by enzymes (Frankenburg 1946, 1950). There are many enzymes in tobacco leaf cells, which are the main catalytic factors involved in many chemical transformation pathways during tobacco leaf fermentation. The enzyme activity in tobacco leaf cells was higher under high temperature and high humidity conditions (Zelitch and Zucker 1958). A series of studies has focused on the structure, function and quality improvement of the microbial community before and after cigar tobacco fermentation. There are different kinds of microorganisms on the surface of cigar tobacco leaves from different places. The main microbial species include fungi and bacteria of *Bacillus*, *Staphylococcus*, *Corynebacterium*, *Lactobacillus*, *Pseudomonas*, *Penicillium*, *Aspergillus*, *Rhizopus* and *Mucormycosis* (Giacomo et al. 2007; Huang et al. 2010; Zhou et al. 2020). During fermentation, a variety of microorganisms on the surface of tobacco leaves, and cigar tobacco leaves contain organic matter such as sugar, protein and fat needed for microbial propagation and growth. Under suitable environmental conditions, microorganisms multiply and grow and secrete metabolically related enzymes to breakdown and utilize the carbohydrates and nitrogen compounds in tobacco leaves and further degrade them into small molecule metabolites, key to achieving a better and

pleasant taste during smoking (Frankenburg 1950; Liu et al. 2021; Giacomo et al. 2007; Zhang et al. 2023). Microbial communities showed significant correlations with protein, lignin, and cellulose (Tao et al. 2022). However, the diversity and dynamics of the microbial community and physicochemical properties at different fermentation stages remain unclear. Microorganisms of cigar tobacco leaf change dynamically with time. However, previous studies have focused only on the postfermentation stages, and little is known about the diversity and dynamics at different fermentation stages. The current study captured temporal changes in microorganisms at different fermentation stages, thereby assisting in the understanding of the microbial community associated with cigar tobacco leaf fermentation. After proper fermentation, the smoking quality, leaf appearance and physical properties of cigar tobacco leaves were obviously improved, which was closely related to the chemical changes in tobacco tissues during fermentation (Han 2010). Hitherto, there has been no systematic study on the quality, enzyme and microbial changes of cigar tobacco leaves during fermentation.

In this study, we collected cigar tobacco leaves at different fermentation stages from three different production areas, analyzed the changes of the chemical composition, physical properties, metabolic enzymes, and characterized the fungal and bacterial communities by amplicon sequencing, and further studied their interactions effects, so as to provide microecological insights on leaf fermentation. Specifically, we first identified the core microbial community, then analyzed the changes to this community over time. Then, the random forest classification model was used to establish a model to correlate the composition of the microbiota with the fermentation cycles. Finally, network analysis was used to explore the cooccurrence mode of the core microbiome and metabolic enzymes or physicochemical characteristics.

Materials and methods

Experimental materials

Cigar tobacco (*Nicotiana tabacum*, Yunxue No. 1) was grown in Lincang (LC, N23.3°, E 99.0°; Altitude, 560 m), Puer (PE, N22.3°, E 101.3°; Altitude, 600 m) and Dehong (DH, N23.5°, E 97.4°; Altitude, 747 m) in Yunnan. The freshly harvested cigar tobacco leaves were strung on a bamboo or wooden pole and air-curing in a local curing room for 40 days. After air-curing in DH and LC, the tobacco leaves were naturally fermented locally for one month. The tobacco leaves in the PE were immediately transported to the fermentation factory after curing. Central tobacco leaves of 1000 kg were selected from three locations and sent to the fermentation factory in

Yuxi for standardized artificially controlled fermentation. The fermentation experiments were carried out according to Yunnan cigar tobacco leaf stacking fermentation technical regulations (enterprise standard, Q/YNYC(K). J02-2022), and the specific treatment process includes pest control, sorting, rehumidification, balancing, stacking, fermenting, repiling (5 times) and unstacking. Turning occurred immediately when the temperature reached 40°C or when there was a cooling trend. Approximately 500 g of tobacco leaves taken before fermentation (F0) and during each repiling (F1, F2, F3, F4, F5) were used in the following analyses. Each sample was given a specific code as shown in Fig. 1. The growing locations, including Lincang, Puer and Dehong, were denoted LC, PE and DH, respectively. Fermentation samples were denoted followed by a number (indicating the fermentation stages or the numbers of repilings). A total of 54 cigar tobacco leaf samples from three origins and six different fermentation cycles were collected. Approximately 20 g of cigar tobacco leaves were cut with sterilized scissors, placed in centrifugal tubes quickly frozen and stored at -80°C for DNA extraction and enzymatic analysis. The remaining tobacco leaves were used for chemical composition analysis, physical property evaluation, and aroma compound determination. Three independent biological replicates were analyzed for each location or variety.

Determination of chemical compositions

The indices of the main chemical compositions were total sugar (TS), reducing sugar (RS), total nitrogen (TN), protein (PN), starch (SH), nicotine (NT), potassium oxide (K), chloride ion (Cl), magnesium (Mg), petroleum ether extract, pectin (PT), acid cellulose (AC), acid lignin (AL), total polyphenols (TP), total amino acids (TAA) and pH. The content of each index was determined by using a continuous flow analytical system or ion chromatography (Li et al. 2015). The contents of TS, RS, TN, PN, SH, NT, K, Cl, Mg, PEE, PT, AC, AL and pH were separately determined in accordance with the standards in the tobacco industry YC/T 159–2019, YC/T 159–2019, YC/T 161–2002, YC/T 249–2008, YC/T 249–2008, YC/T 468–2013, YC/T 217–2007, YC/T 162–2011, YC/T 175–2003, YC/T176-2003, YC/T 346–2010, YC/T 347–2010, YC/T 347–2010, YC/T 222–2007. The contents of TP and TAA were determined using a spectrophotometric method based on the books published by Yu (2009).

Determination of physical properties

Physical indicators of cigar tobacco include leaf filling value (LFV, $\text{cm}^3 \cdot \text{g}^{-1}$), leaf stem ratio (LSR, %), leaf water retention (LWR, %), leaf thickness (LTH, μm), leaf tension (LTV, N), leaf density (leaf mass weight, LMW, %). All the physical index methodologies were based on the books published by Yu (2009).

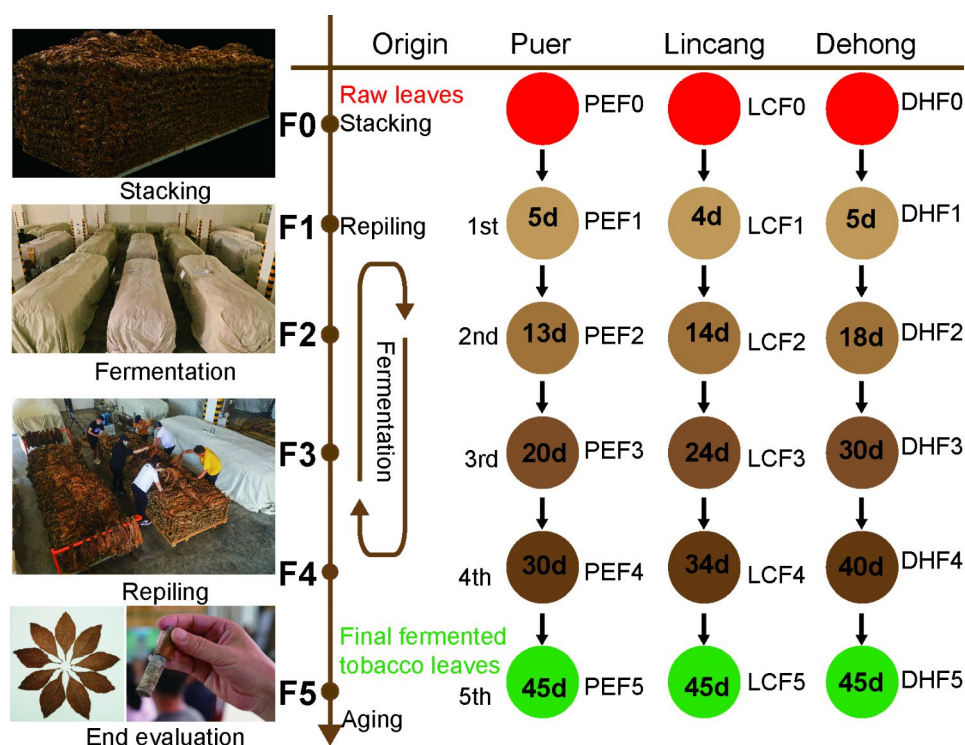


Fig. 1 Overview of the cigar tobacco leaf fermentation processing experiments

Determination of volatile aroma compounds

The samples of LCF0, LCF5, DHF0, DHF5, PEF0, PEF1, PEF2, PEF3, PEF4, PEF5 were used for the determination of aroma substances. The indices of 44 volatile aroma compounds (VACs, Table S1) were detected by steam distillation extraction and combined gas chromatography/mass spectrometry (GC-MS) (Li et al. 2015; Baker et al. 2004). Quantitation based on the quantitation ion which is unique in the coeluted components increased the accuracy of peak integration.

Determination of metabolic enzymatic activity

The activities of 18 metabolic enzymes during fermentation in different producing areas were determined and analyzed. Including peroxidase, neutral protease (NP), lignin peroxidase (LiP), cellulase (CL), phenylalanine ammonia-lyase (PAL), pectinase (PN), catalase (CAT), sucrase (SU), polyphenol oxidase (PPO), total amylase (AL), α -amylase (α -AL), β -amylase (β -AL), neutral invertase (NI), AD-malate dehydrogenase (NAD-MDH), glutamine synthetase (GS), glutamate dehydrogenase (GDH), lipoxigenase (LOX), nitrate reductase (NR), and alkaline protease (AKP). All enzyme activities were determined using an enzyme-linked immunosorbent assay (ELISA) kit (Solarbio or mlbio, Beijing, China) following the manufacturer's instructions.

Microbial DNA extraction and sequencing

Total genomic DNA from the samples was extracted using the cetyltrimethylammonium bromide (CTAB) method. DNA concentration and purity was monitored on 1% agarose gels. The V4 regions of the bacterial 16 S rRNA gene were amplified using the forward primer 515 F (5'-GTGCCAGCMGCCGCGGTAA-3') and the reverse primer 806R (5'-GGACTACHVGGGTWTCTAAT-3'). The fungal internal transcribed spacer gene was amplified using the universal primers ITS1F (5'-CTTGGTCATTTAGAGGAAGTAA-3') and ITS2R (5'-GCTGCGTTCTTCATCGATGC3'). The PCR products quantification and qualification was carried out based on previous methods (Haas et al. 2011). Sequencing libraries were generated using the TruSeq[®] DNA PCR-Free Sample Preparation Kit (Illumina, San Diego, CA, USA) following the manufacturer's recommendations and index codes were added. The library quality was assessed on the Qubit[®] 2.0 Fluorometer (Thermo Scientific, Waltham, MA, USA) and Agilent Bioanalyzer 2100 system (Agilent, Santa Clara, CA, USA). The library was sequenced on an Illumina NovaSeq platform and 250 bp paired-end reads were generated.

Processing of sequencing data

Paired-end reads were split based on their unique barcodes and were cut off the barcodes and primer

sequences. Using FLASH (Version 1.2.11) (Magoč and Salzberg 2011) was used to merge paired-end reads when at least ten bases overlapped with the opposite end reads of the same DNA fragment. Quality filtering were performed using the fastp (Version 0.20.0) software to obtain high-quality clean tags. The clean tags were compared with the reference database (Silva database 138.1, <https://www.arb-silva.de/> for 16 S, Unite database 2017.12, <https://unite.ut.ee/> for ITS) using Vsearch (Version 2.15.0) (Haas et al. 2011) to detect and remove the chimera sequences. Denoise was performed with the DADA2 module in the QIIME2 software (Version QIIME2-202006) to obtain initial ASVs (amplicon sequence variants), and then ASVs with abundances less than 5 were filtered out Bolyen et al. 2019. Species annotation and multiple sequence alignment were performed using QIIME2 software. The absolute abundance of ASVs was normalized using a standard sequence number corresponding to the sample with the least sequences. Subsequent analysis of alpha diversity and beta diversity were all performed based on the output normalized data.

Statistical analyses

The statistical analysis was performed using the SPSS software package (Chicago, IL, USA) and OriginPro 2023(10.0.0.154). Two way ANOVA was used to analyze the significant impact of different origins (PE, LC, DH) and fermentation stages (F0-F5) on the physicochemical indicators of cigar tobacco leaves. Tukey's Honestly Significant Difference (Tukey's HSD) was used to determine the mean differences between different fermentation stages. Student's t test was used to determine if the physicochemical properties indices before fermentation were significantly different from those after fermentation. A probability of $P < 0.05$ indicated that the measured differences were significant. Unsupervised PCA (principal component analysis) was performed by MetaboAnalyst platform (<https://www.metaboanalyst.ca/>). The data was unit variance scaled before unsupervised PCA. For two-group analysis, differential VACs were determined by VIP ($VIP \geq 1$) and absolute Log_2FC ($|\text{Log}_2\text{FC}| \geq 1.0$). VIP values were extracted from OPLS-DA result, which also contain score plots and permutation plots, was generated using MetaboAnalyst platform. The data was log transform (\log_2) and mean centering before OPLS-DA. The alpha diversity and beta diversity of microbial communities were calculated with QIIME2 using weighted UniFrac distance between samples for bacterial 16 S rRNA reads and Bray-Curtis dissimilarity for fungal ITS reads (Bolyen et al. 2019). Principal coordinate analysis (PCoA) was performed to evaluate the distribution patterns of microbiomes based on β -diversity calculated by the Bray-Curtis distance with the LabDSV R package. Oneway analysis of variance (ANOVA) was used to determine

whether fermentation stages and regions contained statistically significant differences in diversity. Permutational multivariate analyses of variance (PERMANOVA) using distance matrices to determine the statistically significant differences with the *adonis* function in the *vegan* R package. Canonical correspondence analysis (CCA) visualization diagram was drawn using an RStudio package (version 2.15.3). Cytoscape was used to explore the co-occurrence and interaction patterns between core taxa and metabolic enzymes, physicochemical properties and volatile compounds.

Results

Chemical composition changes during fermentation

Chemical composition changes during fermentation. The conventional chemical components of cigar tobacco leaf from three locations were analyzed before fermentation (F0) and at different fermentation stages (F1, F2, F3, F4, F5). The OriginPro 2023 was used to determine the mean difference between different fermentation stages using Tukey's HSD. Two-way analysis of variance showed that the total nitrogen ($F=3.26$, $P=0.001$), total sugar ($F=4.038$, $P=0.0025$), reducing sugar ($F=12.591$, $P<0.0001$), starch ($F=8.726$, $P<0.0001$), total polyphenols ($F=3.000$, $P=0.016$), acid cellulose ($F=6.098$, $P<0.0001$), acid lignin ($F=4.800$, $P<0.0001$), pectin ($F=4.848$, $P<0.0001$), and protein ($F=7.699$, $P<0.0001$) in cigar tobacco leaves were significantly different during fermentation. The results showed that the TS, RS, SH, AC, AL, PT, TP, PN and pH in cigar tobacco leaves were significantly decreased after fermentation (Fig. 2). There were no significant changes in the contents of nicotine, potassium oxide, chloride ion, magnesium, petroleum ether extract and total amino acids.

Physical properties changed during fermentation

There were no significant changes in the physical properties including leaf filling value (LFV), leaf stem ratio (LSR), leaf equilibrium moisture content (water retention, LWR), leaf thickness (LTH), leaf tension (LTV), leaf density (leaf mass weight, LMW) during fermentation. However, with the prolongation of the fermentation period, the LWR showed a trend of gradual increase, and the LTV showed a trend of gradual decrease after repiling three times (Fig. 2).

Volatile aroma compounds changed during fermentation

A total of 44 volatile aroma compounds (VACs) were further analyzed qualitatively and quantitatively based on GC-MS before and after the fermentation of cigar tobacco leaves. The VAC profiles were found to vary significantly during fermentation in leaves of Puer region (Fig. 3A). In the PCA diagram, the first two principal components (PC1 and PC2) were shown to explain 41.3%

and 16.8% of the data variance in different fermentation stages, respectively. The 18 samples from the six fermentation stages were divided into two distinct groups, suggesting that each group had a relatively distinct metabolic VAC profile (Fig. 3C). Group 1 included PEF0. Group 2 included PEF1, PEF2, PEF3, PEF4, PEF5 and PEF6 (Fig. 3D). These two groups could be easily distinguished from each other (Fig. 3A and B). The PCA and hierarchical clustering heatmap of VACs results showed that the VAC profiles were different various fermentation periods. In this study, orthogonal projections to latent structures discriminant analysis (OPLS-DA) analyses were performed to investigate the discriminatory VACs contributing to differences among before fermentation (F0) and after fermentation (F5) from three regions. we evaluated the differences using the OPLS-DA model between DHF0 and DHF5 ($R^2X=0.703$, $R^2Y=0.909$, $Q^2=0.843$), between PEF0 and PEF5 ($R^2X=0.521$, $R^2Y=0.98$, $Q^2=0.905$), between LCF0 and LCF5 ($R^2X=0.419$, $R^2Y=0.629$, $Q^2=0.471$). According to an $FC \geq 1$ or ≤ 0.5 and $VIP \geq 1$, there were 19 differential metabolites between DHF0 and DHF5 (upregulated=3, downregulated=16), 26 between PEF0 and PEF5 (upregulated=3 downregulated=23), and 25 between LCF0 and LCF5 (upregulated=6, downregulated=20 (Fig. 3C). Among these, 9 volatile aroma compounds were potential markers among three locations, 3 were significantly up-regulated and 6 were significantly down-regulated, including furfural, neophytadiene, pyridine, benzyl alcohol, geranylacetone, 3-hydroxy-2-butanone, N-hexanal, 3-Methyl-1-butanol and 2,3-pentanedione (Fig. 3D).

Diversity of the microbial community in the cigar Tobacco leaves

This work aimed to evaluate the changes in the microbial community of cigar tobacco leaves during fermentation stages. A total of 4,091,288 bacterial 16 S rRNA and 4,197,729 fungal ITS sequences were obtained from 54 samples of cigar tobacco leaves, and the rarefaction curve tended to be flat, indicating that deep sequencing provided good overall operational taxonomic unit (ASV) coverage (Fig. S1). Among all the ASVs identified in this study, the bacteria shared by all three locations had 111 ASVs, mainly at the genus level of *Acinetobacter*, *Sphingomonas*, *Enterobacterales*, *Stenotrophomonas*, *Bacillus*, *Corynebacterium*, *Pseudomonas* and *Staphylococcus*. The PE, LC and DH had 4152, 743, 89 unique ASVs, respectively (Fig. S2A). For fungi, three locations shared 111 ASVs, mainly at the genus level of *Aspergillus*, *Penicillium*, *Alternaria*, *Cladosporium* and *Fusarium*. PE, LC, and DH had 337, 454 and 149 unique ASVs, respectively (Fig. S2B).

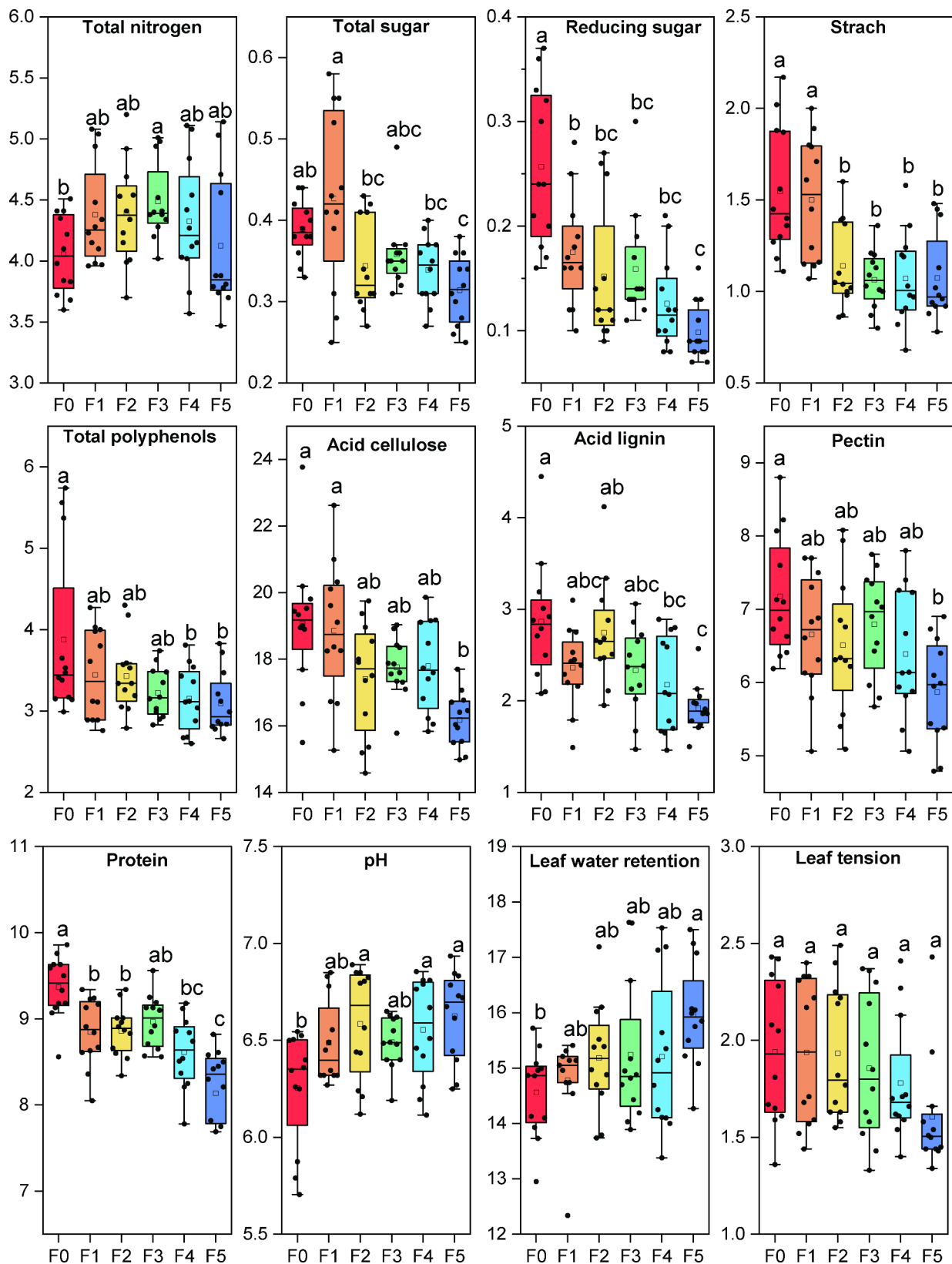


Fig. 2 Changes in conventional chemical components and physical properties in cigar tobacco leaves during fermentation. The values in the Figure are the mean value of four biological replicates sourced from three locations (n=12, P<0.05)

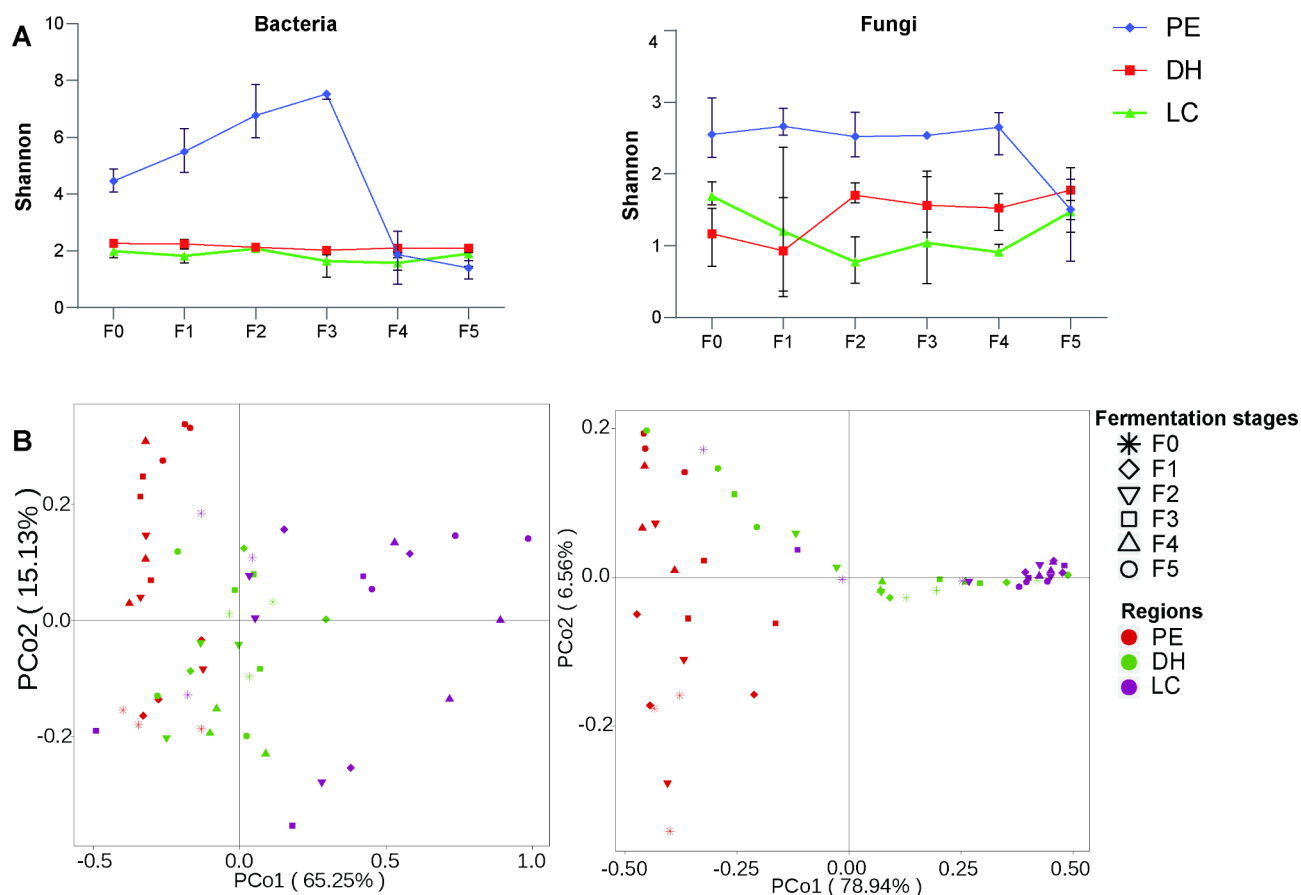


Fig. 3 Multivariate statistical analysis of volatile aroma compounds (VACs) during fermentation of cigar tobacco leaves. **(A)** Score scatter plot for the principal component analysis (PCA) model (PE). **(B)** Hierarchical clustering analysis and heatmap visualization of VAC profiles at different fermentation stages of PE cigar tobacco leaves. **(C)** Important characteristics of different locations (DH, PE and LC) before and after fermentation identified by OPLS-DA. The colored boxes on the right indicate the relative concentrations of the VACs in each group under study. **(D)** The potential markers responsible for the aroma differences among DH, PE and LC. The screening criteria were VIP > 1 and FC > 1.

Microbial succession during fermentation

The diversity and similarity of the microbial community composition in the cigar tobacco leaves varied with the fermentation stages and locations. The α -diversity results showed that the diversity (Shannon index) of bacteria initially increased and then decreased. The fungi communities in our study tended to fluctuate continuously in α -diversity (Fig. 4A). The fungi α -diversity of the PE (F (5,12)=4.188, $P=0.02$) and the bacterial α -diversity (F (5,12)=41.93, $P<0.001$) was significantly reduced (Table 1). but the fungi and bacteria α -diversity of the LC and DH did not change significantly. The fungi and bacteria α -diversity did not change significantly in three locations (Table 1). With the extension of fermentation period, the α -diversity of fungi increased gradually and then reached their maximum value at the fourth repiling (F4) stage (F (2,6)=36.29, $P<0.001$). The α -diversity of bacterial increased gradually and reached their maximum value at the third repiling(F3) stage (F (2,6)=326.8, $P<0.001$). The α - and β -diversity of fungi and bacteria of all stages was greater than all regions (Table 1). These

results showed that the fermentation stages had greater impacts on the microbial diversity than locations. To evaluate the compositional differences of the microbial communities in the samples between locations at each stage, a principal coordinate analysis (PcoA) was performed using the weighted UniFrac metric (bacterial) and Bray-Curtis metric (fungal). Significant differences were observed in the β -diversity of fungi ($R^2=0.566$, $P=0.001$) and bacterial ($R^2=0.411$, $P=0.001$) communities at every single stage, and the locations had a little influence on the beta diversity (fungi, $R^2=0.071$, $P=0.071$; bacteria, $R^2=0.101$, $P=0.383$) (Table 1). The microbial community structures of both bacteria and fungi had a significant temporal succession pattern between the before(F0) and after(F5) fermentation stages, but there was no obvious separation among the F1, F2, F3 and F4 fermentation stages, or in the community structure among DH, PE and LC (Fig. 4B). The succession of the bacterial community was greater than the succession of the fungal community during fermentation (Fig. 4; Table 1).

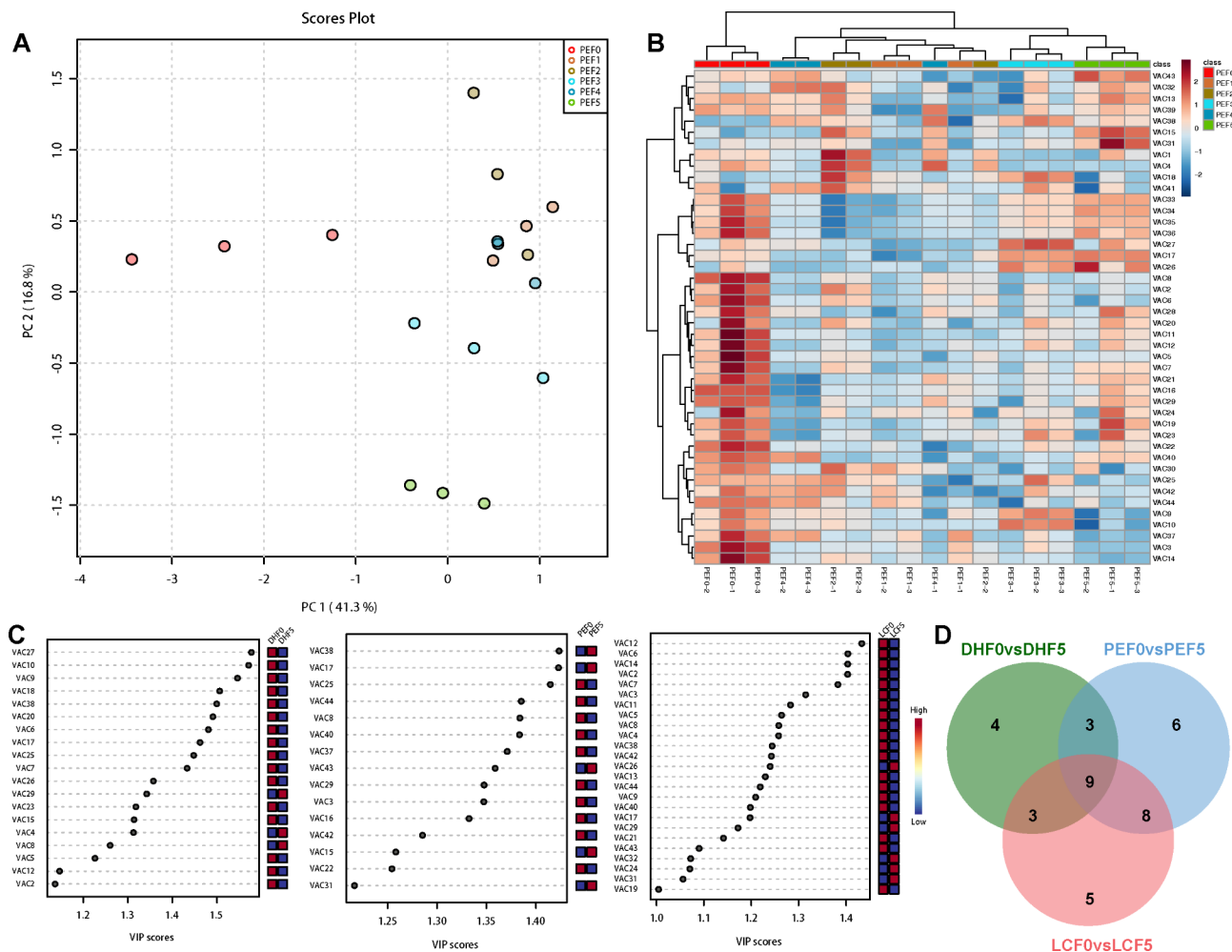


Fig. 4 The changing trend of fungal and bacterial alpha diversity (Shannon index) during fermentation (A). The PCA graphs of the fungal community and the bacterial community at different fermentation stages and from different locations (B)

Dynamic changes in the core microbiota during fermentation

We first identified the core microorganisms of cigar tobacco leaves from three locations at different fermentation stages, which consisted of the most important taxa based on the abundance and occupancy distribution. There were significant differences in the number of core microbial communities in different producing areas, and the relative abundance and occupancy of these core members in different fermentation periods also varied (Table S2). The bacteria mainly included *Staphylococcus*, *Pseudomonas*, *Ralstonia*, *Sphingomonas*, *Bacillus*, *Massilia*, *Fibrobacter*, *Acinetobacter* and *Massilia* (Table S2 a, c, e). The main fungi were *Aspergillus*, *Cladosporium*, *Trichomonascus*, *Alternaria*, *Penicillium*, and *Fusarium* (Table S2 b, d, f). More bacteria than fungi were observed in these core members.

In tracking temporal dynamics and succession of core taxa during cigar tobacco leaf fermentation. The relative abundances of some core core bacteria and fungi

taxa had similar variation trends among PE, LC and DH, generally showing a trend of first increasing and then decreasing. However, the accumulated relative abundances were significantly different at different fermentation stages (Fig. 4). For example, the dominant bacterial genera *Pseudomonas* and *Staphylococcus* were present in high abundance in all fermentation stages of PE, LC and DH (Fig. 5A, B, C). Figure 5D-F reveals fungal dynamics and succession during fermentation. After fermentation commenced, the relative abundance of many core fungal taxa including *Aspergillus* gradually increased, reached their maximum at the F3 and F4 fermentation stages, and then sharply decreased.

To confirm the stability of the core taxa in different fermentation cycles and to establish a model to correlate the composition of the microbiota with the fermentation cycles, the random forest supervised learning model was used to regress the relative abundance of bacteria and fungi at the genus level against the fermentation time. The results showed that these core groups had good

Table 1 Experimental factors predicting α - and β -diversity of microbial communities in cigar tobacco leaves sourced from different locations

Factor	Sample group	α -diversity (Shannon) ^a			β -diversity ^b			Bacterial			Fungal Bray-Curtis			Bacterial weighted UniFrac		
		Df	F	P	Df	F	P	Df	F	P	R ²	P	R ²	P	R ²	P
Origin	PE	5,12	4.188	0.020	5,12	41.93	0.000	5,12	41.93	0.000	0.516	0.005	0.762	0.001		
	LC	5,12	1.116	0.402	5,12	1.204	0.364	5,12	1.204	0.364	0.565	0.017	0.614	0.015		
	DH	5,12	1.792	0.189	5,12	1.259	0.343	5,12	1.259	0.343	0.634	0.014	0.410	0.131		
Stage	All regions	5,48	0.098	0.992	5,48	2.082	0.084	5,48	2.082	0.084	0.071	0.071	0.101	0.383		
	F0	2,6	10.83	0.010	2,6	68.18	0.000	2,6	68.18	0.000	0.691	0.014	0.640	0.010		
	F1	2,6	4.831	0.056	2,6	54.24	0.000	2,6	54.24	0.000	0.842	0.019	0.627	0.025		
	F2	2,6	29.95	0.001	2,6	67.96	0.000	2,6	67.96	0.000	0.858	0.004	0.560	0.011		
	F3	2,6	6.187	0.035	2,6	326.8	0.000	2,6	326.8	0.000	0.516	0.143	0.535	0.052		
	F4	2,6	36.29	0.000	2,6	0.648	0.556	2,6	0.648	0.556	0.912	0.006	0.901	0.006		
	F5	2,6	0.415	0.678	2,6	4.019	0.078	2,6	4.019	0.078	0.889	0.017	0.855	0.003		
All stages	2,51	26.9	0.000	2,51	0.0781	0.000	2,51	0.0781	0.000	0.566	0.001	0.411	0.001			

^a One-way ANOVA ($P < 0.05$). ^b Permutational multivariate analysis of variance (PERMANOVA) using distance matrices ($P < 0.05$). Df denotes degrees of freedom, F denotes statistical magnitude, R² denotes correlation coefficients, and P denotes significant differences at the 0.05 level

ability to discriminate samples at different stages. Bacteria were stronger than fungi, and could accurately identify 50% of PE samples, compared with 33.33% for fungi (Fig. 6A, C). Discrimination of the LC and DH was low, reaching only 33.33% and 16.67%, respectively (Fig. S3A, S4A). The fungal core taxa had lower resolutions for the PE, LC and DH samples, reaching 33.33%, 25.00% and 16.67%, respectively (Fig. 6C, Fig. S3C, Fig. S4C). These results indicated that the core taxa of different fermentation stages were significantly different (Fig. 6A and C, Table S2a-f). The Gini index model showed that many core taxa were important features of the fermentation period model. For example, *Sphingomonas* and *Penicillium* could explain the largest variation of bacterial and fungal communities in PE locations, respectively (Fig. 6B, D). *Cupriavidus* and *Trichomonascus* could explain the largest variation in bacterial and fungal communities in LC locations, respectively (Fig. S3B, D). *Corynebacterium* and *Aspergillus* could explain the largest variation in bacterial and fungal communities in DH locations, respectively (Fig. S4B, D). Taken together, these results confirmed that these microorganisms might be biomarkers associated with certain stages of fermentation and may reflect the functional characteristics at different stages.

Relationship between physicochemical characteristics and microorganisms during fermentation

To investigate the relationship between metabolic enzymes, physicochemical properties and microbial community composition. Canonical correspondence analysis (CCA) was performed based on microbial abundance, metabolic enzymes and physicochemical properties. The results showed that bacterial and fungal communities had significant effects on metabolic enzymes, physicochemical properties and volatile components during leaf fermentation. The measured metabolic enzymes, physicochemical properties and volatile components could explain 35.25%, 42.77% and 31.19% of the bacterial community variation, respectively (Fig. S5A, B, C). The measured metabolic enzymes, physicochemical properties and volatile components could explain 45.88%, 42.00% and 36.65% of the fungal community variation, respectively (Fig. S5D, E, F). The metabolic enzymes: AL, NAD-MDH, PAL, LiP, GDH, NR and CAT were the most important factors closely associated with the bacterial and fungal community (Fig. S5A, D). The pH, PEE, TAA, PN, NT, TS, TN, Mg, K were the most important physicochemical properties closely associated with the bacterial and fungal community (Fig. S5B, E). The volatile components: VAC2, VAC3, VAC6, VAC7, VAC8, VAC11, VAC16 and VAC17 were the most important factors closely associated with the bacterial and fungal community (Fig. S5C, F).

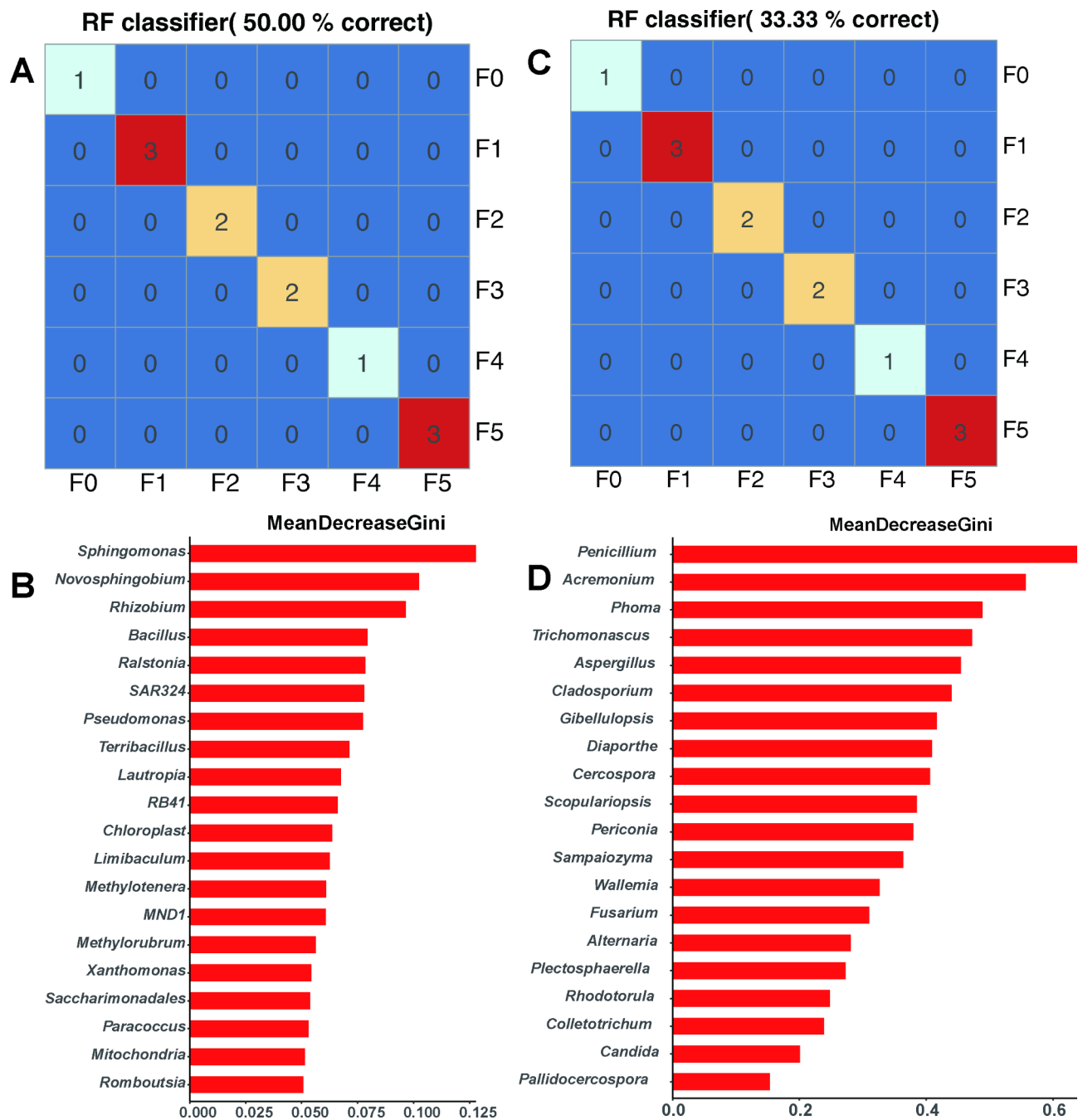


Fig. 5 The relative abundance of core microbiota at different fermentation stages. The top 10 relative abundances are shown. **A, B,** and **C** represent the relative abundance of core bacterial communities in PE, LC, and DH, respectively. **D, E,** and **F** represent the relative abundance of core fungal communities in PE, LC, and DH, respectively

To further explore the co-occurrence patterns between core taxa and metabolic enzymes, physicochemical properties and volatile compounds, molecular ecological networks were constructed. In general, a more densely connected module was observed in the bacteria than in the fungi (Fig. 7, Fig. S6). The network of bacteria and volatile aroma components, physicochemical properties, and metabolic enzymes consisted of 181, 38, and 21

associations, respectively, in which 113 edges were positive associations. Most core taxa belong to *Aureimonas*, *Ralstonia*, *Skermanella*, *Methylobacterium-Methylorubrum*, *Ensifer*, *Steroidobacter*, *Staphylococcus*, *Bacillus* and *Microvirga*. In this network, some microbial taxa had significant correlations with various volatile aroma compounds, especially cibai trienediol (VAC41-43), 1-penten-3-one (VAC1), 2-butanone, and 3-hydroxy

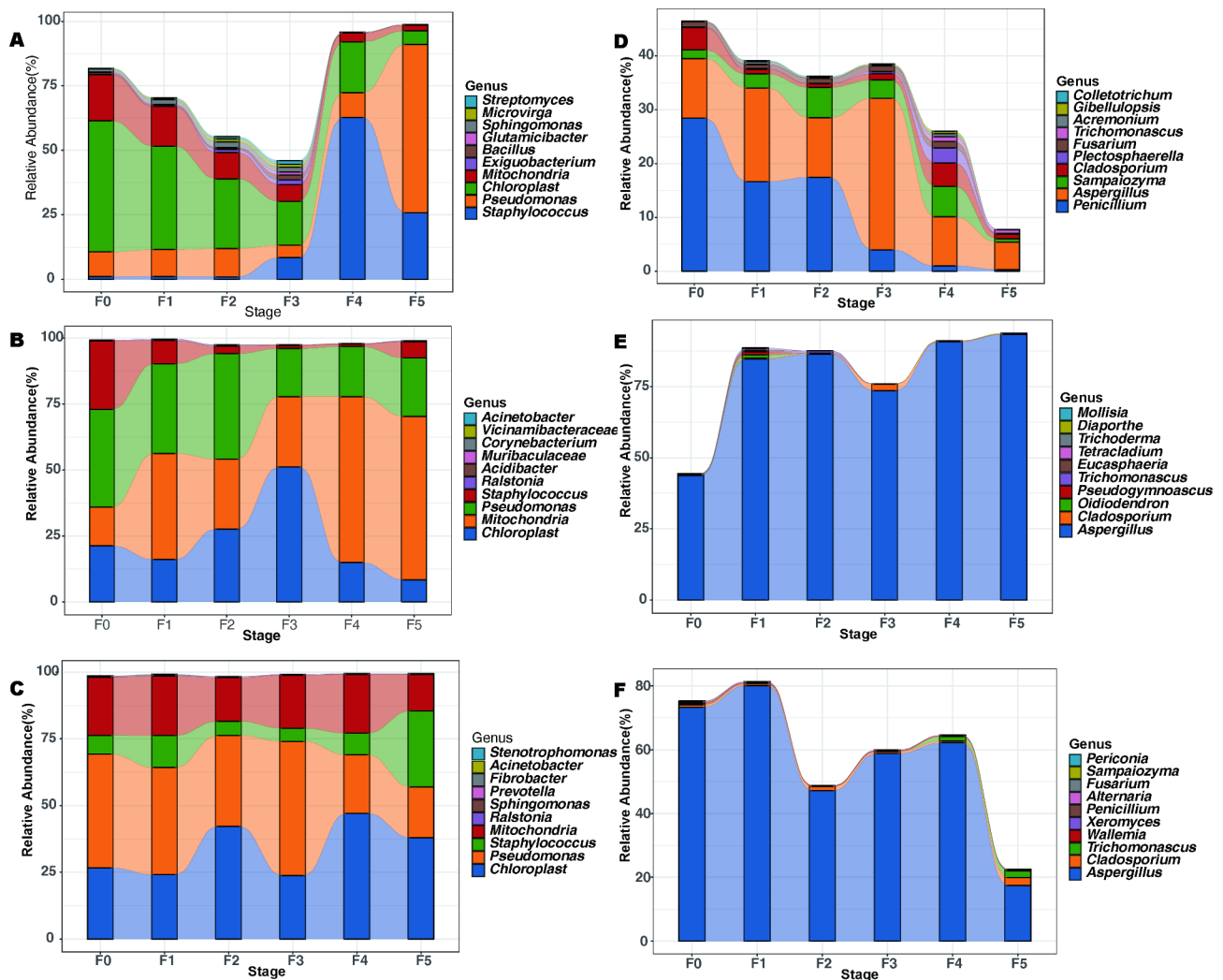


Fig. 6 The core taxa can distinguish the fermentation stages of cigar tobacco leaves. Classification of random forest models of the fermentation stage of the core taxa of PE bacteria (A) and fungi (B). The important features (top 20) based on Mean Decrease Gini (MDG) of random forest models of the core taxa of PE bacteria (C) and fungi (D)

(VAC4), which had high connectivity (Fig. 7A). Some microbial taxa had high connectivity with acid lignin (AL), nicotine (NT), amylase (AL), glutamate dehydrogenase (GDH), and malic dehydrogenase (NAD-MDH) (Fig. S6). The network of fungi and volatile aroma compounds consisted of 99 associations (Fig. 7B), 69 edges of which were positive associations. Most core taxa belonged to *Aspergillus*, *Penicillium*, *Sampaiozyma*, *Trichomonascus*, *Fusarium*, *Wallemia*, *Cercospora*, *Pallidocercospora*, *Mortierella*, *Xeromyces*, *Filobasidium*, *Vishniacozyma*, *Sporobolomyces* and *Podospora*. In general, some bacteria and fungi jointly participated in the metabolism of the fermentation process and played different roles.

Discussion

Fermentation is considered the process of biomass degradation and transformation, which affects the nutritional content, bioactivity, aroma, and flavor properties of the product (Hur et al. 2014). Various metabolic pathways were involved in the fermentation process of cigar tobacco leaves, including biosynthesis of non-nitrogen compounds, degradation and transformation of nitrogen compounds, and the Maillard reaction. For example, organic matter in tobacco leaves will produce inorganic products such as carbon dioxide, water, and ammonia, by combining hydrogen and oxygen in the process of dehydrogenation or degradation. Secondary alkaloids, organic acids, aromatic oils and other volatile substances were released and discharged, resulting in the reduction of dry matter (Frankenburg 1950). In this study, the physicochemical properties and volatile aroma compounds

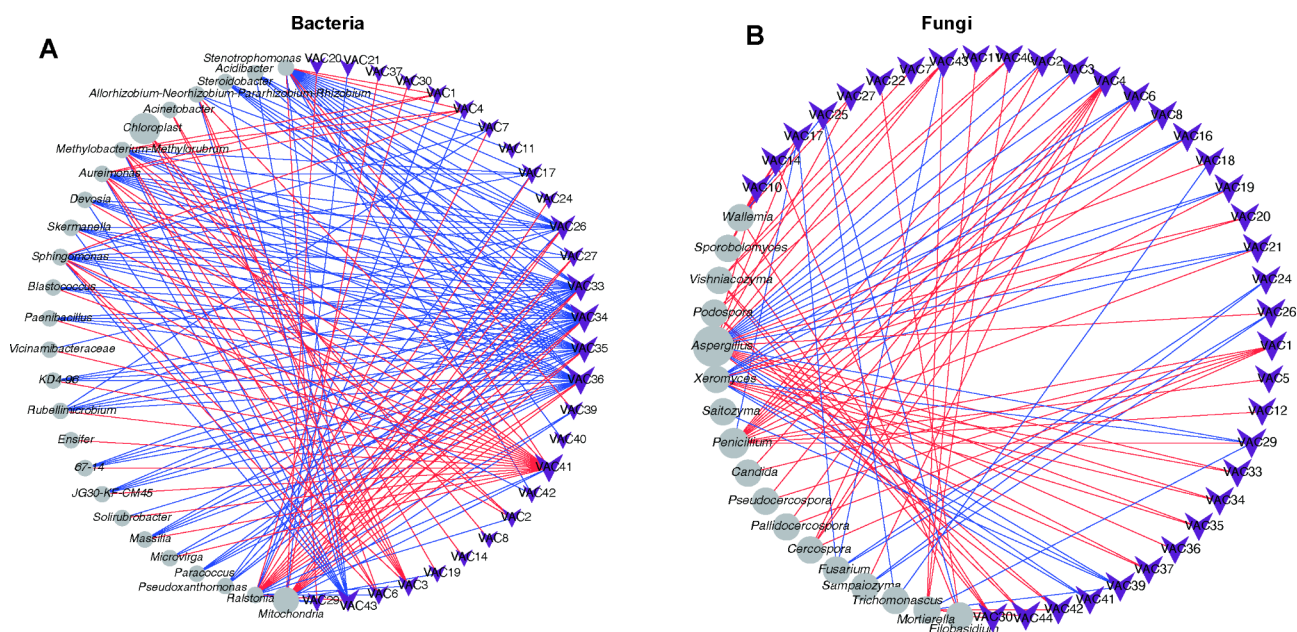


Fig. 7 Network analysis based on the cooccurrence of volatile components (A, B), physicochemical properties (C, D), metabolic enzymes (E, F) and the bacterial and fungal communities. Purple vee nodes represent volatile components. Grey ellipse nodes represent microbial members. Direct connections between nodes indicate strong correlations (Pearson correlation coefficient, $P < 0.05$). Red lines represent positive interactions between nodes, and blue lines represent negative interactions. The sizes of vee nodes represent the interconnected degree. The sizes of the circle nodes represent the average relative abundances of bacteria and fungi

of cigar leaves from three locations were analyzed. The results showed that non-nitrogen compounds including total sugars, reducing sugars, starch, pectin, total polyphenols, lignin and cellulose decreased by 11.37%, 63.02%, 30.58%, 15.84%, 20.95%, 32.91% and 17.05%, respectively. Nitrogen compounds, such as protein, total nitrogen and nicotine decreased by 11.73%, 2.94% and 4.21%, respectively, while amino acids increased by 18.77% (Fig. 1A). Similar results were demonstrated in a recent study in which dominant bacteria and fungi in tobacco leaves had important application prospects in the degradation of carbohydrates, proteins, cellulose, lignin, aromatic and aliphatic compounds (Frankenburg 1950; Liu et al. 2021). Therefore, it is important to explore the key microorganisms in the process of biomass fermentation, find an efficient enzyme system, and clarify the molecular mechanism of microbial degradation and their interaction relationship.

At the initial stage of fermentation, the contents of TS, RS and SH decreased sharply due to the metabolism of biodegradable organic compounds by bacteria and fungi, producing CO_2 , H_2O and organic acids. Pectin is decomposed under the catalysis of pectinase, converted into methanol and volatilized (Frankenburg 1950). Previous studies have found increased lignin methoxyl contents in tobacco leaves after fermentation. and a portion of cellulose was oxidized, contributing to the changes in tension of fermented tobacco leaves (Frankenburg 1946). Our results also showed that leaf tension increased at

the beginning and then decreased during fermentation, which was consistent with previous studies (Fig. 1). Tao et al. (13) found that *Pseudomonas putida* and *Sphingomonas* in tobacco leaves could produce hydrolytic enzymes to degrade cellulose through their own metabolism. In our study, the dominant genera in tobacco leaves were distributed in *Pseudomonas* and *Sphingomonas* (Fig. 4). Consistent with our study (Fig. 1), Frankenburg (1950) found that the tannin and polyphenol contents of cigar leaves decreased from 0.48 to 0.36% after fermentation, and the polyphenols were oxidized to form quinones, which can interact with amino acids and form melanin substances. The initial pH value was 6.17, which then increased to 6.53 after fermentation. The increase in the pH value may be due to the release of large amounts of NH_4^+-N by bacteria during the fermentation process in the decomposition organic matter, such as proteins and nitrogen-containing bases (Awasthi et al. 2016). Consistently, nitrogen-containing compounds were volatilized or degraded and then transformed from water-soluble nitrogen compounds to insoluble nitrogen during fermentation. The genus *Bacillus* is widely distributed in the natural environment and members of *Bacillus* provided about 35% of the microbial protease enzymes in the world. Proteases such as collagenase have recently been discovered and isolated from *Bacillus cereus* (Tao et al. 2022). In particular, macromolecular proteins in tobacco leaves are decomposed into amino acids, amides and quinones. Soluble nitrogen-containing substances,

including amine nitrogen and amide nitrogen, decreased sharply, and a large amount of ammonia was produced after oxidative deamination, which was gradually volatilized out of tobacco leaf tissues during fermentation. The remaining amino acids reacted with quinone substances in tobacco leaves to produce macromolecular polymers. Nicotine is oxidized by fermentation to produce secondary alkaloids and pyridine derivatives (Frankenburg and Gottscho 1955; Frankenburg et al. 1952; Frankenburg, Gottscho, Vaitekunas, & Zacharius, 1955; Frankenburg and Vaitekunas 1957). Consistently, our results showed that the main core bacteria *Bacillus* maintained high abundance at different fermentation stages (Fig. 4), and CCA and cooccurrence network results showed that *Bacillus* was significantly correlated with physicochemical properties (Fig. 7, Fig. S3, 4, 5). Tobacco leaves are full of colloidal capillary porous substances, and colloidal substances (such as protein, pectin, cellulose, etc.) and crystalline substances in the contained substances determine the hygroscopicity of tobacco leaves. After fermentation, some osmotic crystalline substances (such as water-soluble sugars, organic acids, inorganic salts, etc.) and macromolecular colloidal substances were degraded, resulting in a decrease in the self-heating and hygroscopic effects of tobacco leaves (Han 2010), which explains the results of this study, that is, with the extension of the fermentation period, the equilibrium moisture contents of cigar tobacco leaf gradually increased.

Tobacco leaves are rich in aromatic amino acids and terpene compounds, which are important aroma precursors. Their degradation products are one of the important aroma sources in tobacco (Shi et al., 2013). After fermentation, the total amount of VACs were increased (Giacomo et al. 2007). In this study, we observed 16 kinds of important features in different fermentation stages, including valeraldehyde, 6-methyl-2-heptanone, furfural, solavetivone, cibai trienediol-4, beta-ionone 5,6-epoxide, N-hexanal, pyridine, cyclohexanone, 2,3-dimethyl-2-(3-oxobutyl), isoamylalcohol, benzaldehyde, 5-hepten-2-one, 6-methyl, 2,3-pentanedione, 2-acetyl-1-pyrroline, 2-furanmethanol, 2,6-nonadiendial, (E,E), cibai trienediol-3, consisting of seven nonenzymatic browning reaction products, three cibai alkane degradation products, four carotenoid degradation products, one alkaloid and one heterocyclic. Furthermore, there were significant differences in the volatile aroma compounds before and after fermentation in different locations (Fig. 2). The microbial community was closely related to VACs, and aldehydes and ketones were positively related to *Staphylococcus*, *Corynebacterium*, *Tetragenococcus*, *Yaniella*, and *Enteractinococcus* (Zheng et al. 2022; Jia et al. 2023). Our results also showed that VAC33, VAC34, VAC35, VAC36 and VAC41 were significantly associated with a variety of bacteria, and the connection between fungi and

VACs was less than the connection of bacteria (Fig. 7), indicating that the cigar tobacco leaves produced under different ecological conditions have different microbial communities also lead to the difference in VACs and aroma characteristics. The results show that a variety of bacteria can produce highly active enzyme systems in the growth and reproduction process. Under the synergistic action of enzymes, chemistry and microorganisms, the macromolecular substances in tobacco leaves can be degraded, oxidized, reduced, polymerized, coupled and transformed to form low molecular weight compounds, mainly including various aroma compounds.

Microbial degradation and transformation of organic compounds play a crucial role in the fermentation process (Tao et al. 2022). Microorganisms (including bacteria and fungi) are the main participants in the conversion of materials during the cigar tobacco leaf fermentation process (Liu et al. 2021). Our data showed that there were significant differences in the species and structure of microbial communities on cigar tobacco leaves sourced from different locations in Yunnan. There were more bacterial species than fungi, and PE had the most abundant bacterial communities, while DH had the limited fungal and bacterial species (Fig. S2). Consistent with our findings, previous studies have shown that the main microbial communities of tobacco leaf fermentation include *Pseudomonas*, *Bacillus*, *Methylobacterium*, *Acinetobacter*, *Sphingomonas*, *Neophaeosphaeria* and *Cladosporium* (Zhang et al. 2020; Ren et al. 2023). Microorganisms play an important role in the fermentation process of cigar tobacco leaves, and are affected by moisture, temperature, enzymes and physicochemical properties. The CCA and cooccurrence network results showed that some microbial taxa had significant correlations with various metabolic enzymes and physicochemical properties (Fig. 7, Fig. S5, Fig. S6). As bacteria or fungi produce various active enzymes in their metabolism, these enzymes are secreted extracellularly and degrade macromolecular organic compounds in tobacco leaves (Dai et al. 2020; Hur et al. 2014; Vigliotta et al. 2007). Various strains of the *Bacillus* genus can secrete cellulase, pectinase, protease and other functions (Dwibedi et al. 2022), improving the aroma quality of cigar tobacco leaf fermentation and accelerating sweating.

In conclusion, the significance of our research is in identifying the potential metabolic cooperation related to microbial community, which will greatly enhance our understanding of microorganism to convert macromolecular to small molecules or some aroma biomarkers during the leaf stacking fermentation process. The microbial diversity of the cigar tobacco leaves in PE, LC and DH of China were initially increased and then decreased during fermentation. This diversity was mainly associated with fermentation time. At the same time, the microbial

diversity of different locations was significantly different. The molecular ecological networks showed that the core taxa had significant correlations with metabolic enzymes and physicochemical properties. These findings indicated that phylloplane microorganisms play a vital role in the quality and regional characteristics of cigar tobacco leaves.

Supplementary Information

The online version contains supplementary material available at <https://doi.org/10.1186/s13568-023-01642-8>.

Supplementary Material 1

Supplementary Material 2

Acknowledgements

Not applicable.

Author contribution

Conceptualization, G.K. and G.Z. (Guanghai Zhang); methodology, H.Y.; software, G.Z. (Gaokun Zhao); validation, L.Z. and C.L.; investigation, L.Y.; data curation, W.L.; writing—original draft preparation, G.Z. (Guanghai Zhang); writing—review and editing, G.K. and Y.L.; visualization, Y.W.; funding acquisition, G.K. All authors have read and agreed to the published version of the manuscript.

Funding

This research was funded by the China Tobacco Monopoly Bureau Grants and Yunnan Provincial Tobacco Monopoly Bureau, grant number 110202101012(XJ-04)/2021530000241002, and Yunnan Provincial Tobacco Monopoly Bureau, grant number 2020530000241001 and 2021530000241004.

Data Availability

The raw sequencing data have been uploaded to the National Center for Biotechnology Information (NCBI) Sequence Read Archive (SRA) database under BioProject number PRJNA856456 at <https://www.ncbi.nlm.nih.gov/bioproject/PRJNA856456>.

Declarations

Ethics approval and consent to participate

This article does not contain any studies with human participants or animals performed by any authors.

Conflict of interest

The authors declare no conflict of interest.

Consent for publication

All authors agree to publish.

Competing interests

The authors declare no competing interests.

Author details

¹Yunnan Academy of Tobacco Agricultural Sciences, Kunming, Yunnan 650021, China

Received: 31 October 2023 / Accepted: 17 November 2023

Published online: 22 November 2023

References

- Awasthi MK, Pandey AK, Bundela PS, Wong JW, Li R, Zhang Z (2016) Co-composting of gelatin industry sludge combined with organic fraction of municipal solid waste and poultry waste employing zeolite mixed with enriched nitrifying bacterial consortium. *Bioresour Technol* 213:181–189. <https://doi.org/10.1016/j.biortech.2016.02.026>
- Baker RR, da Silva JRP, Smith G (2004) The effect of Tobacco ingredients on smoke chemistry. Part I: flavourings and additives. *Food Chem Toxicol* 42:3–37. [https://doi.org/10.1016/S0278-6915\(03\)00189-3](https://doi.org/10.1016/S0278-6915(03)00189-3)
- Banozic M, Jokic S, Ackar D, Blazic M, Subaric D (2020) Carbohydrates-key players in Tobacco aroma formation and quality determination. *Molecules* 2510.3390/molecules25071734
- Bolyen E, Rideout JR, Dillon MR, Bokulich NA, Abnet CC, Al-Ghalith GA, Alexander H, Alm EJ, Arumugam M, Asnicar F (2019) Reproducible, interactive, scalable and extensible microbiome data science using QIIME 2. *Nat Biotechnol* 37:852–857. <https://doi.org/10.1038/s41587-019-0209-9>
- Dai J, Dong A, Xiong G, Liu Y, Hossain MS, Liu S, Gao N, Li S, Wang J, Qiu D (2020) Production of highly active extracellular amylase and cellulase from *Bacillus subtilis* ZIM3 and a recombinant strain with a potential application in Tobacco fermentation. *Front Microbiol* 11:1539. <https://doi.org/10.3389/fmicb.2020.01539>
- Dwivedi V, Rath SK, Joshi M, Kaur R, Kaur G, Singh D, Kaur G, Kaur S (2022) Microbial endophytes: application towards sustainable agriculture and food security. *Appl Microbiol Biotechnol* 106:5359–5384. <https://doi.org/10.1007/s00253-022-12078-8>
- Frankenburg WG (1946) Chemical changes in the harvested Tobacco leaf: part I. chemical and enzymic conversions during the curing process, in *Adv Enzymol Relat areas Mol Biol*. 309–387. <https://doi.org/10.1002/9780470122518.ch8>
- Frankenburg WG (1950) Chemical changes in the harvested Tobacco leaf. II. Chemical and enzymic conversions during fermentation and aging. *Adv Enzymol Relat Areas Mol Biol* 10:325–441. <https://doi.org/10.1002/9780470122556.ch8>
- Frankenburg WG, Gottscho AM (1955) The chemistry of Tobacco fermentation. I. Conversion of the alkaloids. B. The formation of oxynicotine. *J Am Chem Soc* 77:5728–5730. <https://doi.org/10.1021/ja01626a076>
- Frankenburg WG, Vaitekunas AA (1957) The chemistry of Tobacco fermentation. I. Conversion of the alkaloids. D. Identification of cotinine in fermented leaves. *J Am Chem Soc* 79:149–151. <https://doi.org/10.1021/ja01558a039>
- Frankenburg WG, Gottscho AM, Mayaud EW, Tso T-C (1952) The chemistry of Tobacco fermentation. I. Conversion of the alkaloids. A. The formation of 3-pyridyl methyl ketone and of 2,3'-dipyridyl. *J Am Chem Soc* 74:4309–4314. <https://doi.org/10.1021/ja01137a018>
- Frankenburg WG, Gottscho AM, Vaitekunas A, A, Zacharius RM (1955) The chemistry of Tobacco fermentation. I. Conversion of the alkaloids. C. The formation of 3-pyridyl propyl ketone, nicotinamide and N-methylnicotinamide. *J Am Chem Soc* 77:5730–5732. <https://doi.org/10.1021/ja01626a077>
- Giacomo M, Paolino M, Silvestro D, Vigliotta G, Imperi F, Visca P, Alifano P, Parente D (2007) Microbial community structure and dynamics of dark fire-cured Tobacco fermentation. *Appl Environ Microbiol* 73:825–837. <https://doi.org/10.1128/AEM.02378-06>
- Haas BJ, Gevers D, Earl AM, Feldgarden M, Ward DV, Giannoukos G, Ciulla D, Tabbaa D, Highlander SK, Sodergren E (2011) Chimeric 16S rRNA sequence formation and detection in Sanger and 454-pyrosequenced PCR amplicons. *Genome Res* 21:494–504. <https://doi.org/10.1101/gr.112730.110>
- Han F (2010) Tobacco chemistry. China Agriculture Press
- Huang J, Yang J, Duan Y, Gu W, Gong X, Zhe W, Su C, Zhang K-Q (2010) Bacterial diversities on unaged and aging flue-cured Tobacco leaves estimated by 16S rRNA sequence analysis. *Appl Microbiol Biotechnol* 88:553–562. <https://doi.org/10.1007/s00253-010-2763-4>
- Hur SJ, Lee SY, Kim YC, Choi I, Kim GB (2014) Effect of fermentation on the antioxidant activity in plant-based foods. *Food Chem* 160:346–356. <https://doi.org/10.1016/j.foodchem.2014.03.112>
- Jia Y, Liu Y, Hu W, Cai W, Zheng Z, Luo C, Li D (2023) Development of Candida Autochthonous starter for cigar fermentation via dissecting the microbiome. *Front Microbiol* 14:1138877. <https://doi.org/10.3389/fmicb.2023.1138877>
- Li Y, Lin q, Pang T, Shi J, Kong G, Mu x (2015) Qualitative and quantitative analysis of volatile flavor components in Tobacco leaf by gas chromatography-mass spectrometry. *J Anal Sci* 31:372–378. <https://doi.org/10.13526/j.issn.1006-6144.2015.03.016>
- Liu F, Wu Z, Zhang X, Xi G, Zhao Z, Lai M, Zhao M (2021) Microbial community and metabolic function analysis of cigar Tobacco leaves during fermentation. *MicrobiologyOpen*. 1010.1002/mbo3.1171.

- Magoč T, Salzberg SL (2011) FLASH: fast length adjustment of short reads to improve genome assemblies. *Bioinformatics* 27:2957–2963 <https://doi.org/10.1093/bioinformatics/btr507>
- Ren M, Qin Y, Zhang L, Zhao Y, Zhang R, Shi H (2023) Effects of fermentation chamber temperature on microbes and quality of cigar wrapper tobacco leaves. *Appl Microbiol Biotechnol*. <https://doi.org/10.1007/s00253-023-12750-7>
- Tao J, Chen Q, Chen S, Lu P, Chen Y, Jin J, Li J, Xu Y, He W, Long T, Deng X, Yin H, Li Z, Fan J, Cao P (2022) Metagenomic insight into the microbial degradation of organic compounds in fermented plant leaves. *Environ Res* 214:113902. <https://doi.org/10.1016/j.envres.2022.113902>
- Vigliotta G, Di Giacomo M, Carata E, Massardo DR, Tredici SM, Silvestro D, Alifano P (2007) Nitrite metabolism in *Debaryomyces hansenii* TOB-Y7, a yeast strain involved in Tobacco fermentation. *Appl Microbiol Biotechnol* 75:633–645. <https://doi.org/10.1007/s00253-007-0867-2>
- Yu J, Gong C (2009) Primary processing of Tobacco raw materials. China Agriculture Press
- Zelitch I, Zucker M (1958) Changes in oxidative enzyme activity during the curing of Connecticut shade Tobacco. *Plant Physiol* 33:151–155. <https://doi.org/10.1104/pp.33.2.151>
- Zhang Q, Geng Z, Li D, Ding Z (2020) Characterization and discrimination of microbial community and co-occurrence patterns in fresh and strong flavor style flue-cured Tobacco leaves. *MicrobiologyOpen* 9:e965. <https://doi.org/10.1002/mbo3.965>
- Zhang Q, Kong G, Zhao G, Liu J, Jin H, Li Z, Zhang G, Liu T (2023) Microbial and enzymatic changes in cigar Tobacco leaves during air-curing and fermentation. *Appl Microbiol Biotechnol* 107:5789–5801. <https://doi.org/10.1007/s00253-023-12663-5>
- Zheng T, Zhang Q, Li P, Wu X, Liu Y, Yang Z, Li D, Zhang J, Du G (2022) Analysis of microbial community, volatile flavor compounds, and flavor of cigar tobacco leaves from different regions. *Front Microbiol* 13:907270. <https://doi.org/10.3389/fmicb.2022.907270>
- Zhou J, Yu L, Zhang J, Zhang X, Xue Y, Liu J, Xiao Z (2020) Characterization of the core microbiome in tobacco leaves during aging. *MicrobiologyOpen* 9:1002/mbo3.984

Publisher's Note

Springer Nature remains neutral with regard to jurisdictional claims in published maps and institutional affiliations.